

# CARBOLITE®

## **IGERO** 30-3000°C

# 3216 Programming Wizard

iTools

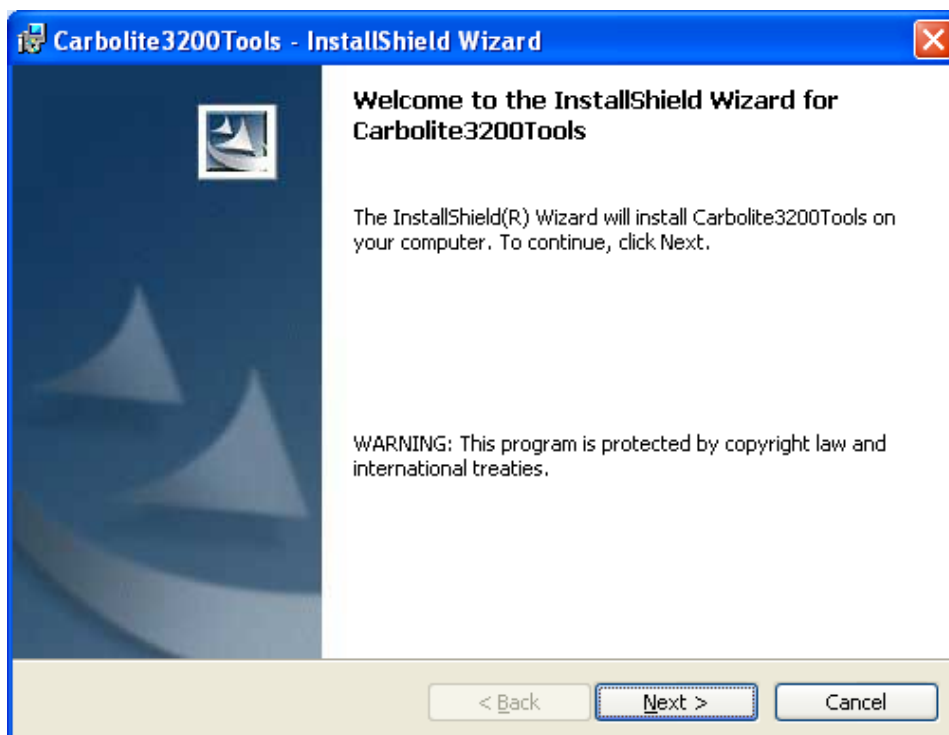
## User Guide

### Contents

1.0	Installing the software.....	2
2.0	Establishing Communication .....	3
3.0	Creating Program Clone Files .....	6
4.0	Loading Program Clone Files to the 3216 Temperature Controller.....	9
5.0	To Run a Program Using the Controller .....	11

## 1.0 Installing the software

Insert the 3216 Programming Wizard CD into your computer. The following window will appear.

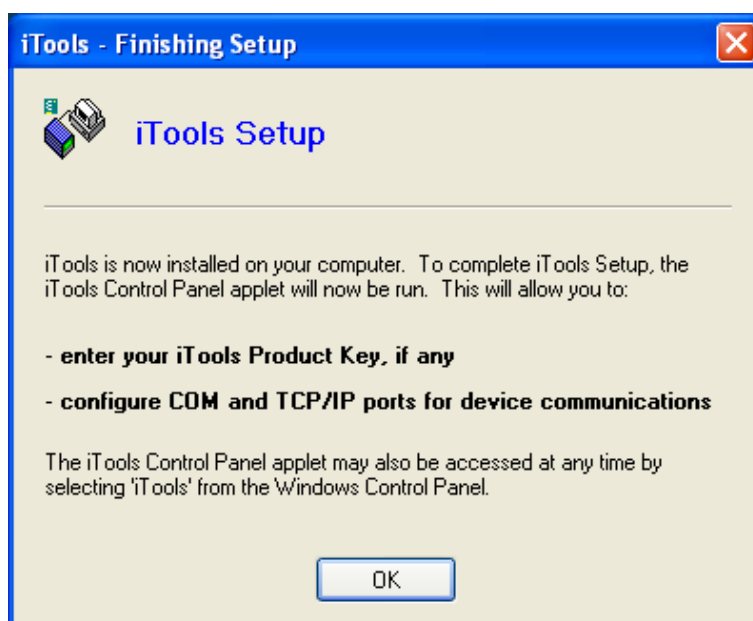


Click '**Next**' & accept the licence.

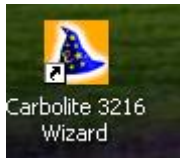
Input your Name and organisation and click Next.

Select the complete installation. Start the installation.

After the installation the following window will appear.



Click '**OK**' and if iTools is already installed the product ID key will be complete. Click OK. Click finish on the wizard installation window.



The 3216 Wizard short cut icon will have been added to your desktop.

## 2.0 Establishing Communication

Connect the computers 9 pin serial connector (male) to the 9 pin connector on the product (female) via a 'straight through' RS232, or RS485, cable. If the computer does not have a 9 pin serial connector use a 9 pin RS232, or RS485, to USB converter and connect through a USB port on the computer.

Switch on the product.

Double click the 3216 Wizard shortcut to start the software.

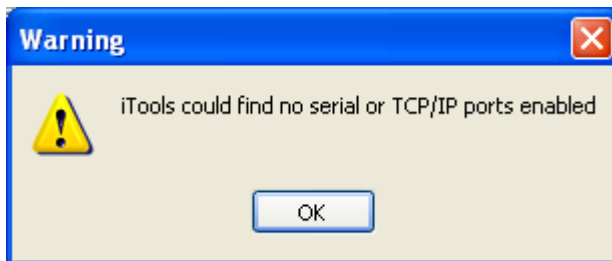


Click to '**configure a device connected to this computer**'



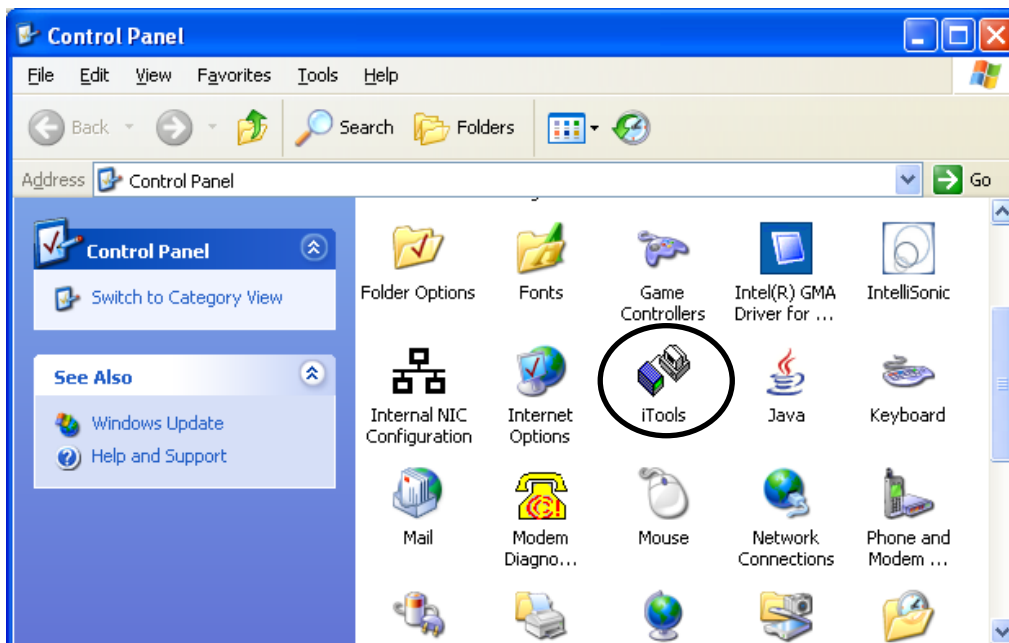
The software will scan for devices. The 3216 controller should be found. Click 'Next'.

You may get this message:

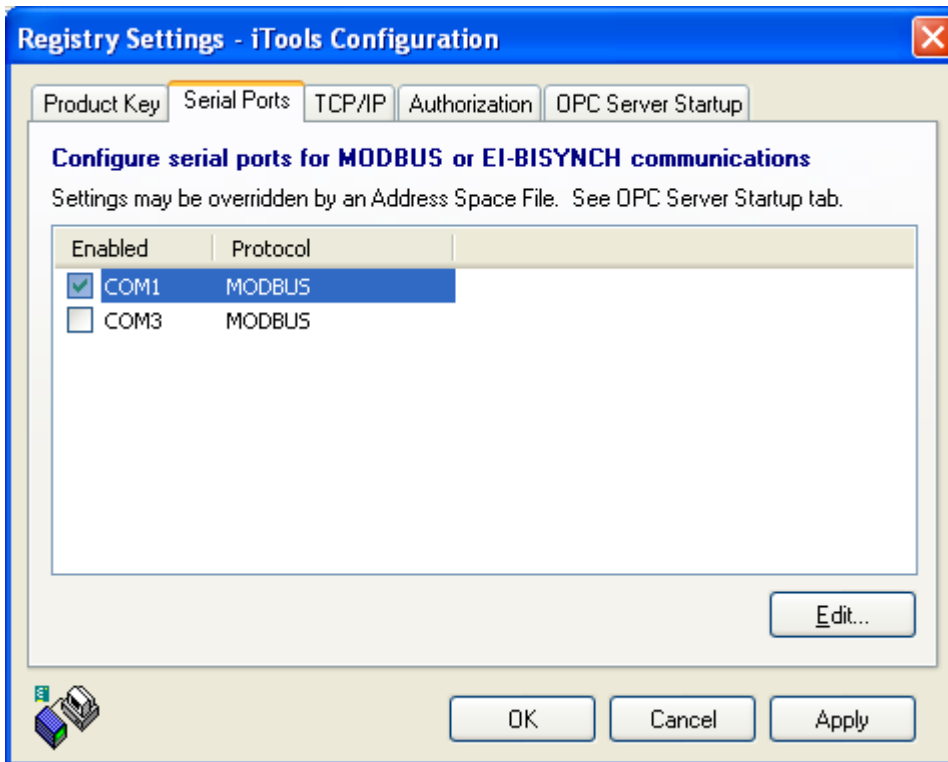


If you do get this message, open the windows control panel (not in the iTools software) and double click the iTools icon.

**Note:** This icon can be seen in large icon view not category view.



The '**Registry Settings – iTools Configuration**' window will appear.



Click on the '**Serial Ports**' tab

Click the '**COM1**' tick box to enable the serial port

Click '**Apply**' and close this window and close the control panel window.

The Program will then be able to find

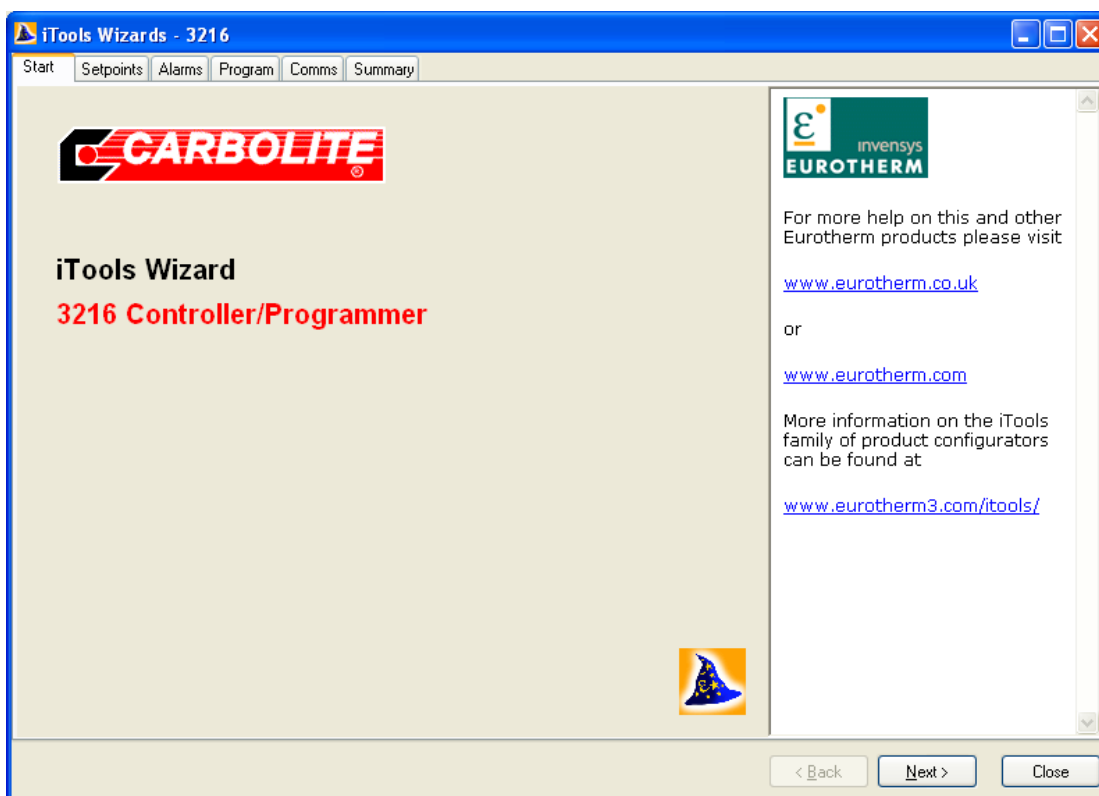
the device when scanning.

The following window will appear.

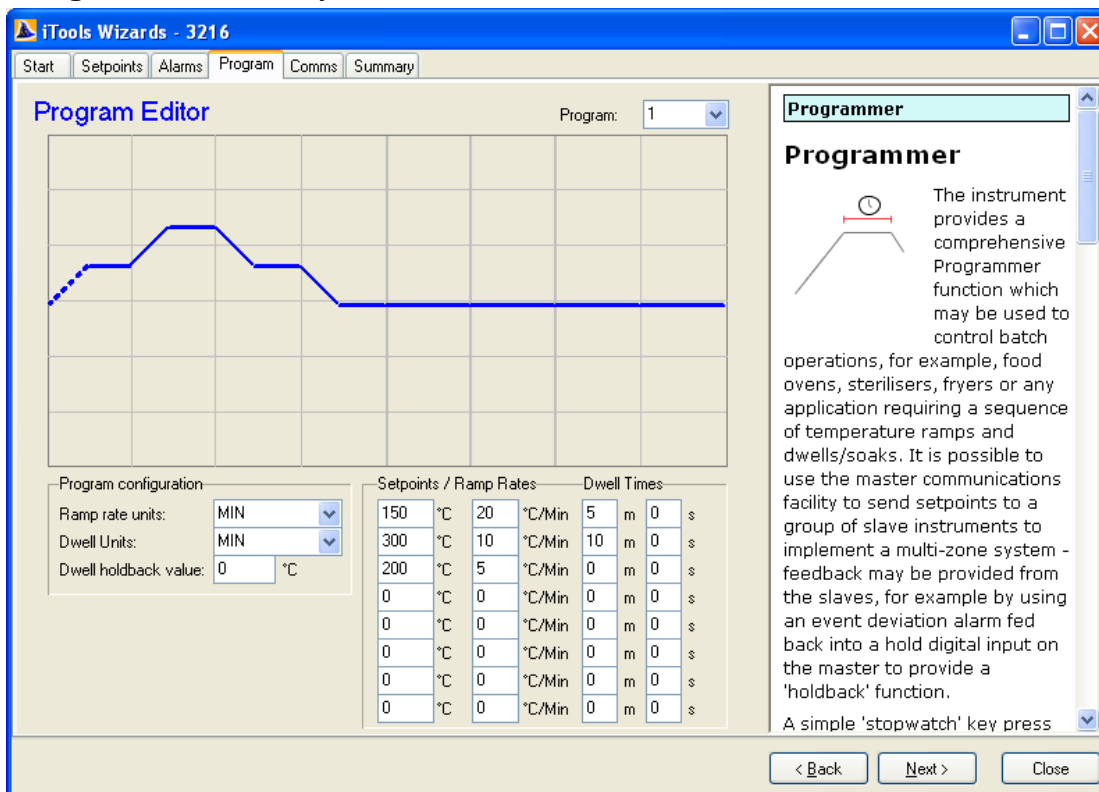


Accept the default selected '**Carbolite 3216 Wizard**' and click next and this will take you to the '**iTools Wizard 3216**' interface screen.

### 3.0 Creating Program Clone Files

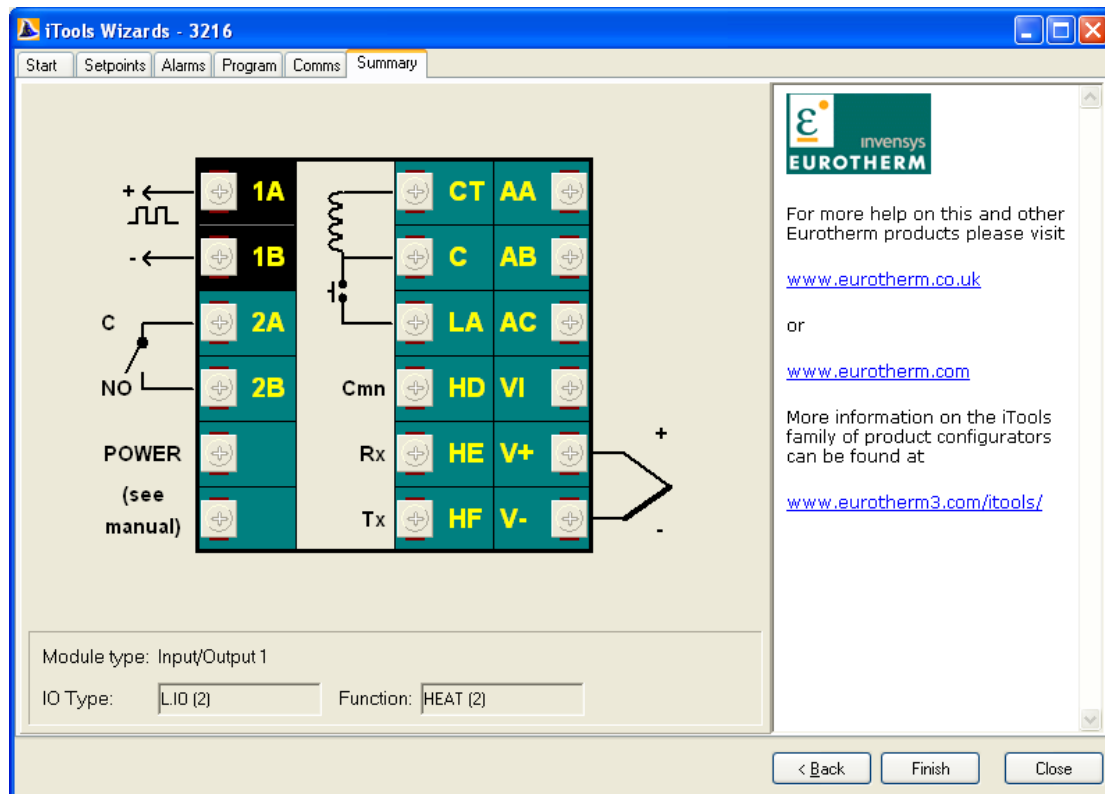


Click on the 'Next' button until you get to the 'Programs' tab or click on the 'Programs' tab directly

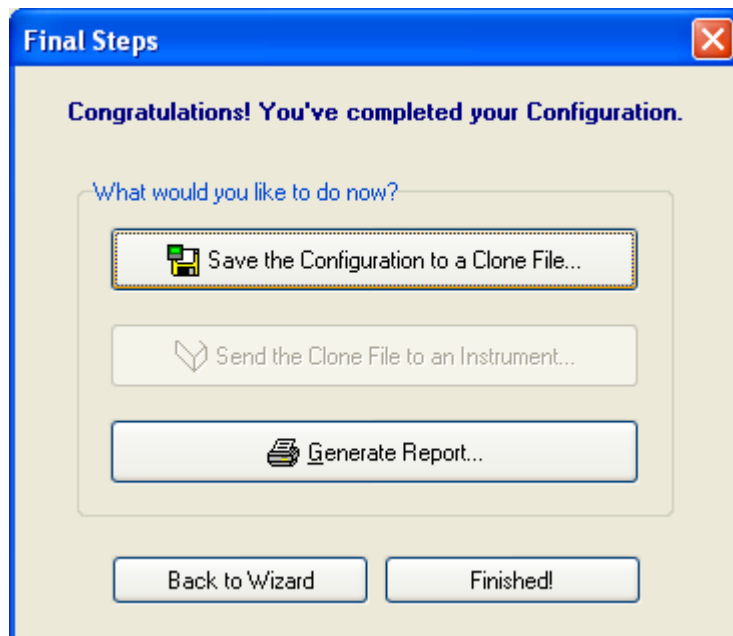


Enter the values required for your program. There is help text on the right hand side of the window.

Click the next button until you get to the **'Summary'** tab or click the **'Summary'** tab directly.

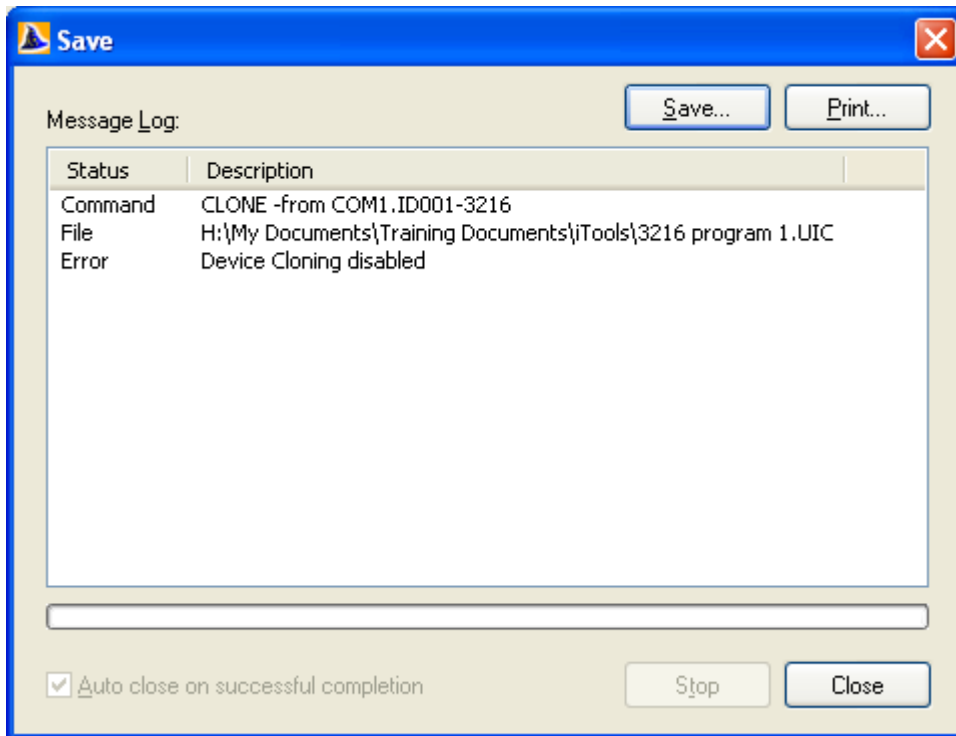


Click on the **'Finish'** button

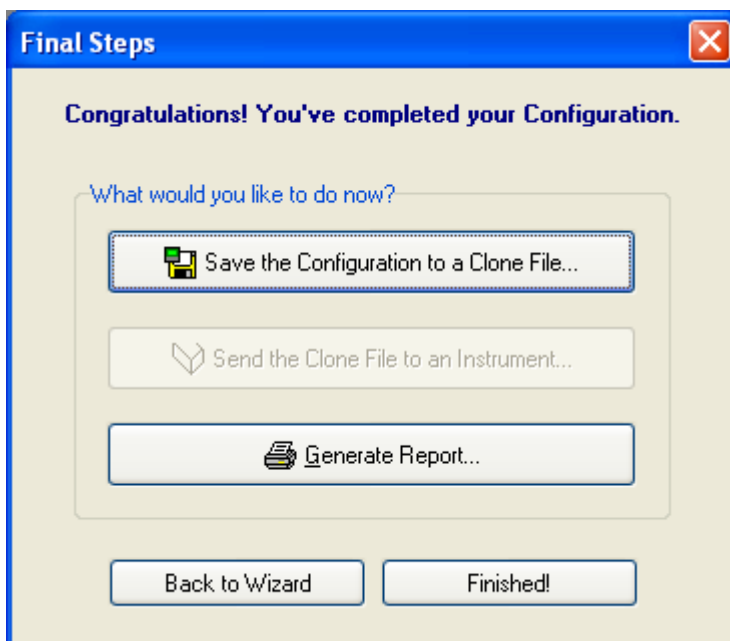


Click on the **'Save the Configuration to a Clone File'** button so your program can be recalled for future use. Enter the location and file name and save.

After saving you will be prompted to save or print a **'message log'** file.



Click **'Save'** or **'Print'** if you wish then click close on this window



Click on the **'Back to Wizard'** button if you wish to set up and save more clone files or the **'Finished'** button.

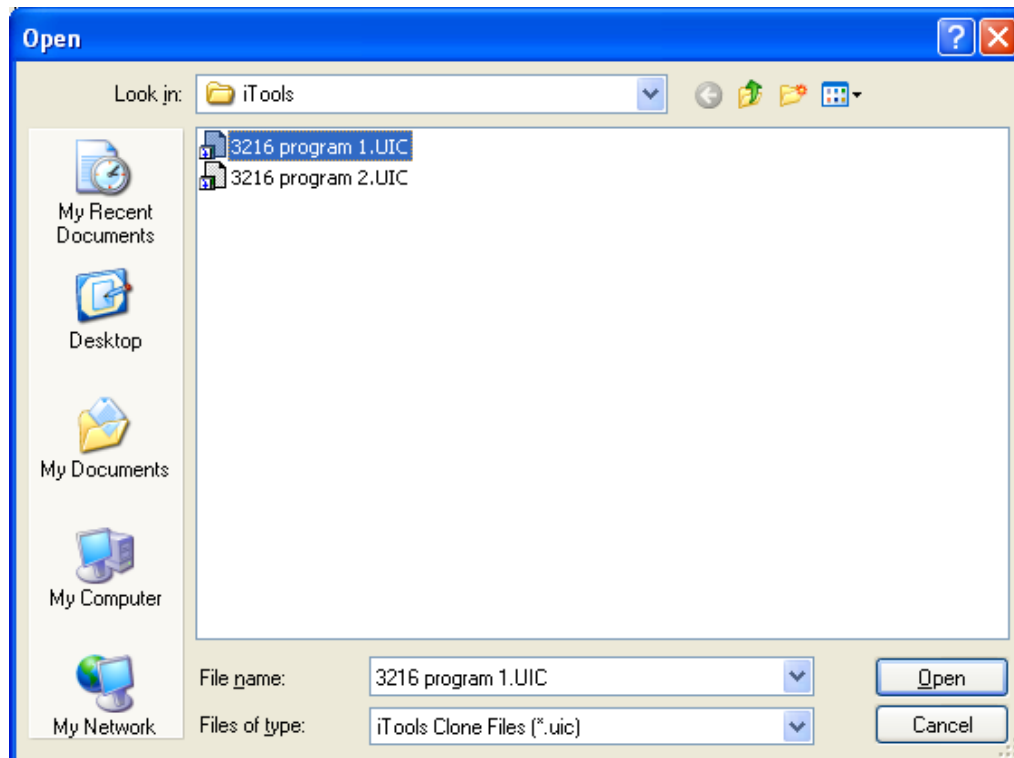


## 4.0 Loading Program Clone Files to the 3216 Temperature Controller

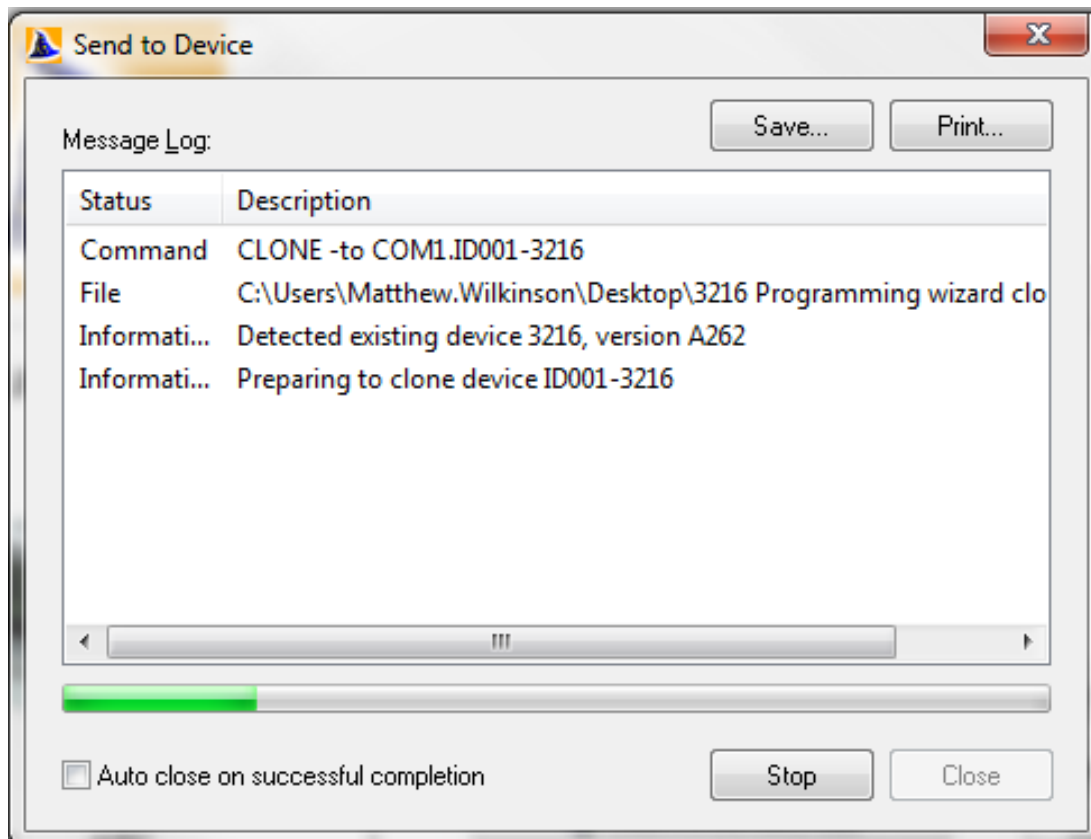
Start the wizard software as before. When you get to this window



Choose the 'Download Clone File to Device' button



Select the program clone file you wish to download and click 'Open'



Choose if to print or save the **'message log'** and then click **'Close'**



Then click the **'Next'** button and this will take you to the **'iTools Wizard 3216'** interface screen.

## 5.0 To Run a Program Using the Controller



To select a program press the  $\leftarrow$  button until *PRG* appears

Then press  $\lambda$  or  $\cup$  to select the correct program

To run the program press and quickly release  $\lambda$   $\cup$  at the same time

To stop the program press and hold  $\lambda$   $\cup$  at the same time

---

*For preventive maintenance, repair and calibration of all Furnace and Oven products, please contact:*

**Carbolite Gero Service**

**Telephone:** +44 (0)1433 624242

**Fax:** +44 (0)1433 624243

**Email:** ServiceUK@carbolite-gero.com



Carbolite Gero Limited, Parsons Lane, Hope, Hope Valley, S33 6RB, England.

**Telephone:** +44 (0)1433 620011

**Fax:** +44 (0)1433 621198

**E-mail:** info@carbolite-gero.com